



Firm Foundation Christian School-



Firm Foundation Christian School- Campus (New Building #2- Classroom, Gym, Library)

Company profile

Firm Foundation Christian School is a non-profit ministry of the Apostolic Lutheran Church. The private school serves students from Pre- Kindergarten through the 12th Grade

Business situation

The school was growing faster than the facilities would support and needed more space to support addition students and expand their curriculum. The school also wanted to expand from middle school to grades 9 through 12 and offer a comprehensive high school program.

Technical situation

The Firm Foundation Christian School wanted to stay located at the current campus, located in Clark County Washington, just outside the City limits of Battle Ground. The campus was originally approved for a second building and a separate play structure, however due to changes in priorities and the programs the school was looking at offering, the school board wanted to explore changing the approved design from two structures to a single more comprehensive building with an enclosed gymnasium.

Solution

As part of the design and approval process, Firm Foundation Christian School, initiated a Post Decision Review Process with Clark County. Once this approval was obtained, it was confirmed that the school could make changes to the originally approved building square footage in any arrangement the School Board thought best to fit the desired programs, as long as the new design did not exceed 10% of the originally approved square footage.

The programming process with the School Board occurred simultaneous with the Post Decision Review to continue in parallel paths in order to save time in the overall project and to be able to begin design work as soon as County approval was obtained.

Design involved working closely with the School Board and Faculty to develop concepts and schematic design that met the school's academic and architectural programs. Permit and Construction documents were prepared and evolved using a process of collaboration with various specialty trades and subcontractors who would be involved with the construction of the facility.



Firm Foundation Christian School- Campus (New Building #2- Classroom, Gym, Library)

Benefits

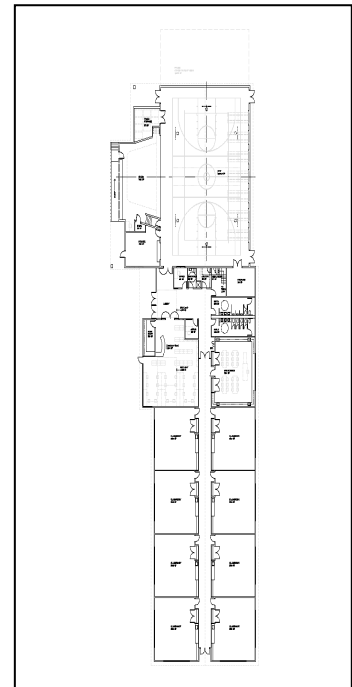
The approach of working closely with the major stakeholders and collaborating with the specialty trades enabled all the parties to participate and understand the final design. This not only allowed for improved communication, but also allowed for discussions in ways to save costs and provide greater value for the school. With the subcontractors involvement in the construction document phase of the project, time was also saved in the project schedule since additional time didn't need to be spent developing contractor scope and costs as this work was already done by the time the construction permits were obtained. The School Board had "real-time" information that helped expedite approvals and minimized the risk of cost overruns and uncertainties.

Services Provided

- Master Planning Services
- Programming Services
- Full Range of Architectural Design Services
- Coordination of Engineering Consultants
- Involvement of Specialty Contractors
- Building Permit Submittal and Approval Process
- Limited Construction Administration Services

Project Summary

Architect/Role: David Commeree, Partner-in-Charge
Client: Firm Foundation Christian School Board
Address: 19919 NE 107th Avenue, Battle Ground, WA
Project Type: 5-12 Educational
Construction Cost: Not Disclosed
Project Area: 20,190 square feet
General Contractor: Mickelson Construction



Project undertaken while with ARCHITECTS Barrentine.Bates.Lee AIA
Bridging design, Construction and Management
Copyright © 2010 DLC Architecture, LLC